

Date  
Company  
Attention  
Project  
Reference  
Notes - SACP80A-HS

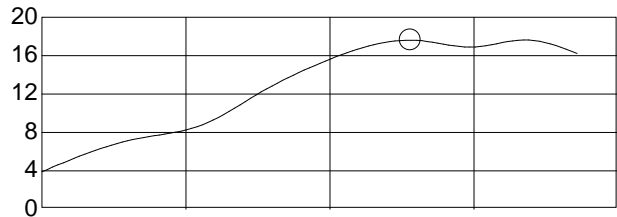


**SMART FAMILY OF  
COOLING PRODUCTS**

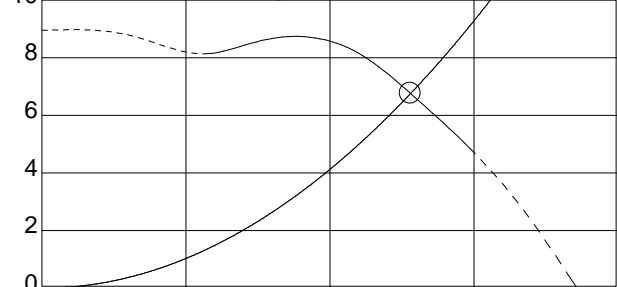
1118 First St E. Humble TX 77338 281-540-2805  
TACLA14492C / Registered dba of Combined Refrigeration, Inc.

Fan Type	txt_SISWAirfoilCurved
Unit	BLW27021 (CLIII)
Operating Conditions	Radial w/o bellmouth
Air Volume	12800 cfm
Static Pressure	6.76 inwg
Velocity Pressure	0.89 inwg
Total Pressure	7.65 inwg
Outlet Velocity	19.38 m/s
Fan Total Efficiency	70.3 %
Fan Static Efficiency	62.7 %
Fan Speed	2091 rpm
Air Temperature	20.0 °C
Altitude	0 m
Fan Absorbed Power	17.62 kW
Motor Installed Power	D160L (18.50 kW 60 Hz 2p )
Motor Speed	-
Service Factor	0 %
Plenum Size	1280 x 1280 x 1453 mm
Outlet Size	558 x 558 mm
Rec. Airflow Variation	0
Fan Pulley / Bush / Shaft	-
Motor Pulley / Bush / Shaft	-
Belt Length	-
Number of Belts / f	-
Static Belt Tension/Belt	-
Belt Deflection	-
Belt Speed (<40m/s)	-
Bearing Life ( L10 / L50 )	-
Starting Torque	-
<b>Operating Limits</b>	
Max. Absorbed Power	35.00 kW
Max. Fan Speed	2600 rpm
Temperature (Min-Max)	-20° to +85°C

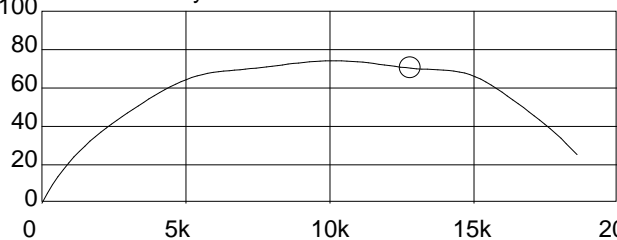
Absorbed Power in kW



Static Pressure in inwg



Total Efficiency %



Air Volume in cfm

Hz	63	125	250	500	1k	2k	4k	8k	Overall
Lwi(Lin)	83	86	83	92	86	80	79	75	94 dB
Lwi(A)	57	70	74	89	86	81	80	74	92 dB(A)
Lpi(A)	50	63	67	82	78	74	73	67	84 dB(A)

\* Sound data is for the inlet side

\* Sound Pressure Level 1m, Room Conditions

